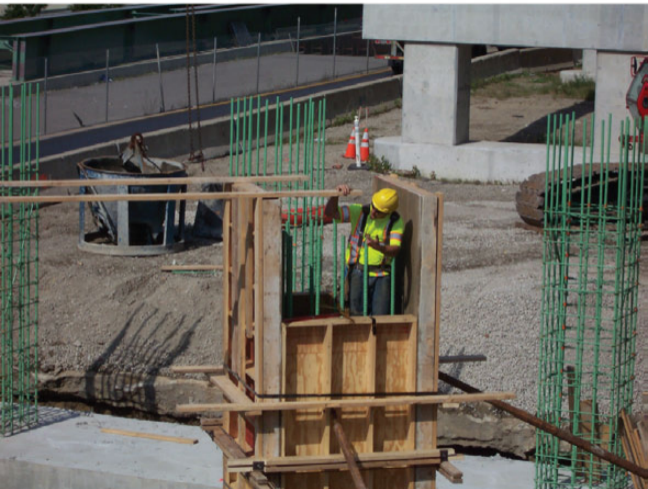




Worker prepping column of pier



Worker prepping column of pier



Lowering steel support beam before pouring concrete for pier



Closer view - Lowering steel support beam before pouring concrete for pier



Closer view - Lowering steel support beam before pouring concrete for pier



Prepping columns prior to pouring concrete



Prepping columns prior to pouring concrete



Prepping columns prior to pouring concrete



Getting ready to remove frame for one of the columns



Getting ready to remove frame for one of the columns



Workers removing frame after concrete has cured



Workers removing frame after concrete has cured



Workers removing frame after concrete has cured



Workers removing frame after concrete has cured



Wood frame removed exposing
cured concrete column



Concrete arriving at the Ambassador Bridge



Concrete being poured into cylinder for transport



Concrete ready to transport



Concrete ready to transport



Concrete transport to location to pour



Concrete transport to location to pour



Ready to drop concrete into column form



Ready to drop concrete into column form



Ready to drop concrete into column form